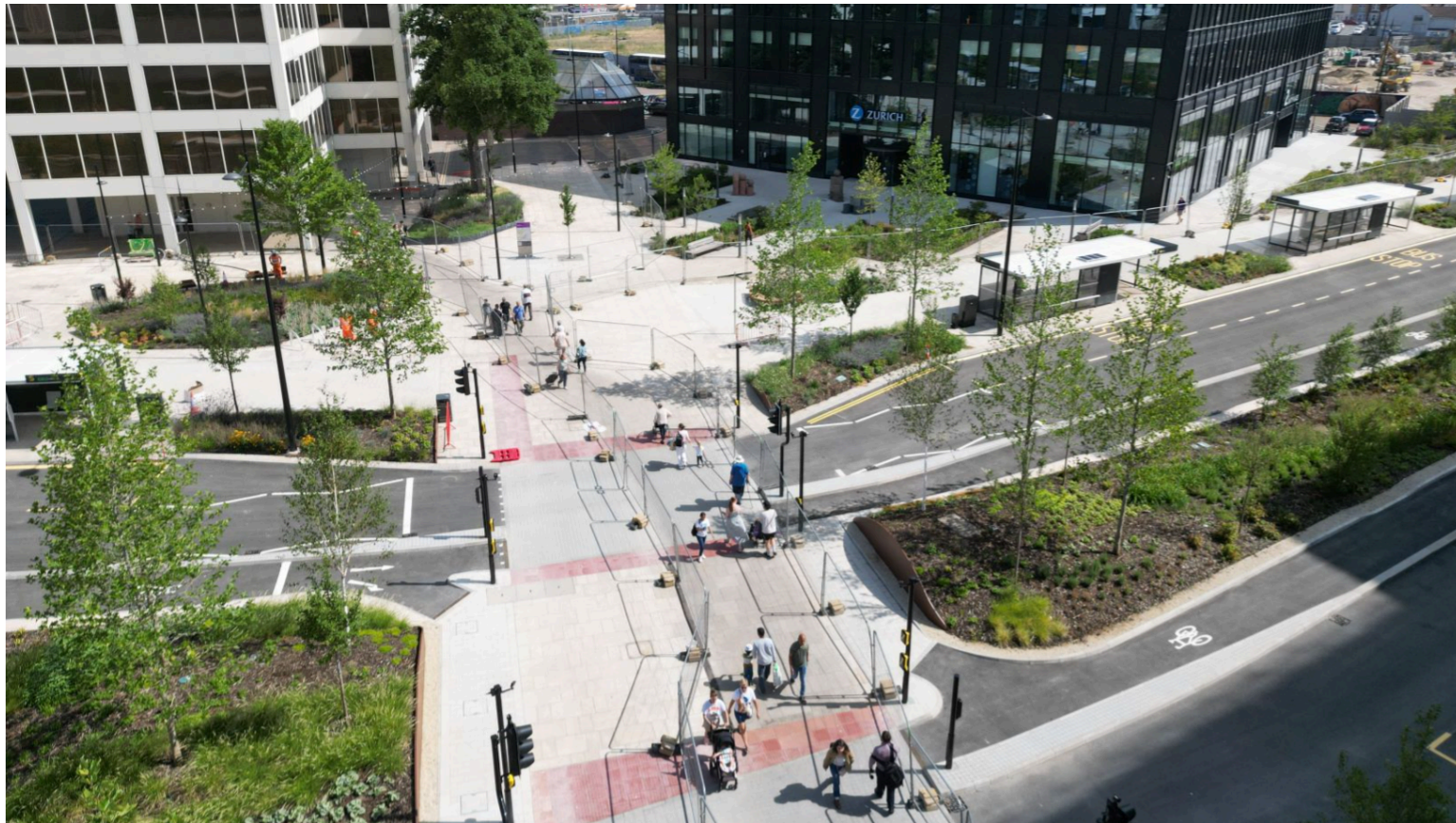


Fleming Way gets ready to open, work at Drove Road, new patching repairs and more...

[Click here to view in your browser](#)



Fleming Way gets ready to open



Bus companies will start to run services from Fleming Way from Sunday, 31 August 2025, marking the final completion of this [major infrastructure scheme](#).

Swindon Bus Company has published a list of [which bus stop will service each of its routes](#), and [a map of where to board](#).

Visitors arriving into the town centre by train, bus or bike will enjoy a vastly-improved public space, with new benches, bike racks, waste bins and more than 185 trees and 23,000 plants and bushes planted.

There will also be new bus shelters with more space to allow for better accessibility for those in wheelchairs as well as wireless charging and digital screens (with Real Time Information for departures) powered by solar panels.

When all bus services are moved to Fleming Way, the current dilapidated bus station will be demolished.

Work to improve Drove Road crossing



Temporary traffic management measures will be in place from Monday (4 August) to allow for the upgrade of the pedestrian crossing outside the fire station on Drove