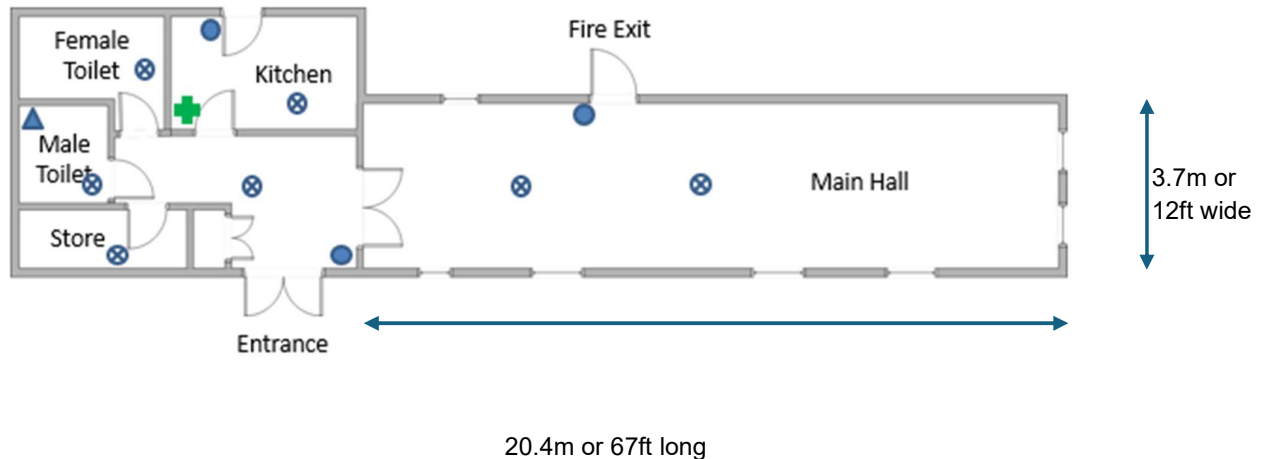


# Fillingham Village Furniture Stocklist




Included in the hire fee is use of any of the following furniture. Most of it is stored in the Main Hall and Store in accordance with the posted visual storage standards. Some is also stored offsite.

The floor area is as below. The hall is 3.2m (10.5ft) high.






Maximum seated capacity is 50.



## Available furniture

Image	Description (length x width x height)	Quantity
	Lightweight 6ft white plastic tables 182cm x 74cm x 74cm	<b>X7</b>
	Lightweight 6ft white Formica top tables 182cm x 68cm x 76cm	<b>X1</b>
	Lightweight 6ft woodgrain Formica top tables 182cm x 61cm x 71cm	<b>X2</b>

# Fillingham Village Furniture Stocklist

	<p>Lightweight 4ft woodgrain Formica top tables 121cm x 61cm x 71cm</p>	<p><b>X3</b></p>
	<p>Lightweight coloured plastic chairs X33 white, x3 yellow, x3pink</p>	<p><b>X39</b></p>
	<p>Lightweight black plastic chairs X21 stored onsite. X17 stored offsite*</p>	<p><b>X38</b></p>
	<p>Pool table 196cmx122cmx86cm The pool table is very heavy. However, it can be used as a large table with advanced notice.</p>	<p><b>X1</b></p>
	<p>Collapsable wooden tables 83cm x 68cm x 73cm Stored offsite*. These tables are heavy and require x2 people to move them.</p>	<p><b>X4</b></p>

\*Items stored offsite can be used upon request, but advanced notice is required and a small transportation fee will be applicable.